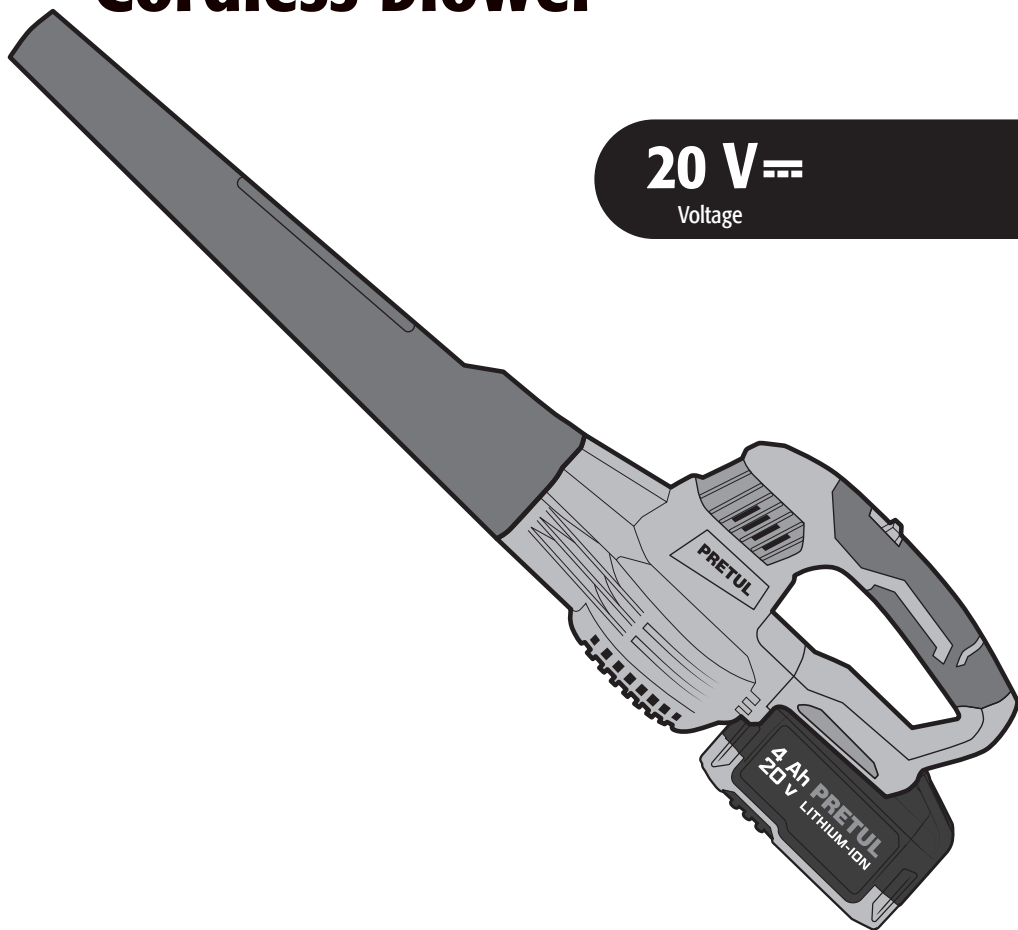


Manual

Cordless blower



20 V 

Voltage

SOPI-20P

Applies for:

Code	Model
28274	SOPI-20P





CAUTION



Read this manual thoroughly
before using the tool.



Technical data	3
Power requirements	3
 General safety warnings for power tools	4
 Safety warnings for the use of blowers	5
Parts	6
Start up	7
Maintenance	9
Troubleshooting	10
Authorized service centers	11
Warranty policy	12


CAUTION


To get the most out of the tool, extend its lifespan, claim the warranty if necessary, and avoid serious risks or injuries, it is essential to read this manual in its entirety before using the tool.

Keep this manual for future references.

The illustrations in this manual are for reference and may differ from the real appearance of the tool.

Use and care recommendations

 Use **ONLY** the provided charger or the one suggested by TRUPER to charge the battery.

 Follow the battery **GUIDELINES** and charging **INSTRUCTIONS** (pages 6 - 7).

 Keep the tool and charger ventilation slots **CLEAN**.



 Perform regular **MAINTENANCE** on your machine (page 9).

SOPI-20P

Code	•	28274
Description	•	Cordless blower
Voltage	•	20 V \equiv
Weight	•	1.2 kg
Speed	•	Pos 1: 8 500 RPM Pos 2: 12 500 RPM
Air Flow	•	90 CFM
Air speed	•	87 MPH
Battery	•	Lithium-ion 20 V \equiv 4 Ah Charging time: about 120 minutes
Charger	•	Input: Voltage: 127 V \sim Frequency: 60 Hz Current: 0.9 A Output: 21 V \equiv 2.5 A

The power cable has Y-type cable holders
The tool's construction class is Class III.
The charger's construction class is Reinforced Insulation.

⚠ WARNING If the power cable is damaged, it must be replaced by the manufacturer or a TRUPER Authorized Service Center to prevent any risk of electric shock or significant accidents. The electrical insulation of this tool is altered by splashes or spillage of liquids during its operation. Before gaining access to the terminals all power sources should be disconnected. Do not expose it to rain, liquids, and/or moisture.

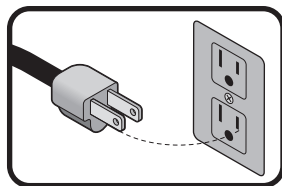
⚠ WARNING Before accessing the terminals, all power circuits must be disconnected.



Power requirements

⚠ WARNING Tools with double insulation and reinforced insulation eliminate the need of a grounded power cord with three prongs or a grounded power connection.

⚠ WARNING When using an extension cable, verify the gauge is enough for the power that your product needs. A lower gauge cable will cause voltage drop in the line, resulting in power loss and overheating. The following table shows the right size to use depending on cable's length and the ampere capability shown in the tool's nameplate. When in doubt use the next higher gauge.



Capacity in Amperes	Number of conductors	Extension gauge	
		from 1.8 m to 15 m	higher than 15 m
from 0 to 10 A	3 (one to ground)	18 AWG(*)	16 AWG
from 10 A to 13 A		16 AWG	14 AWG
from 13 A to 15 A		14 AWG	12 AWG
from 15 A to 20 A		8 AWG	6 AWG

* It is allowed to use it if the extensions themselves have an overcurrent protection device.

AWG = American Wire Gauge. Reference: NMX-J-195-ANCE.

⚠ WARNING When operating electric tools outdoors, use a grounded extension cord marked as **⚡ VOLTECK**. 'Outdoor Use'. These extensions are specially designed for outdoor use and reduce the risk of electric shock.



⚠ WARNING! Read all safety warnings and all instructions. Failure to follow the warnings and instructions may result in electric shocks, fires, and/or serious injuries. **Keep all warnings and instructions for future reference.** The term "power tool" in the warnings refers to your corded electric power tool or cordless power tool (battery-operated).

Work area

Keep your work area clean, organized, and well-lit. Cluttered and dim areas can lead to accidents.



Do not operate the tool in explosive atmospheres, such as in the presence of flammable liquids, gas, or dust.

The electric tools produce sparks that can ignite flammable material.



Keep children and other individuals at a safe distance while using the equipment.

Distractions can cause loss of control and lead to accidents.



Electrical Safety

The tool plug must match the outlet. Never modify a plug. Do not use any type of adapter for grounded tool plugs.



Modified plugs and different outlets increase the risk of electrical shock.

Avoid body contact with grounded surfaces such as pipes, radiators, electric stoves, and refrigerators.

There is an increased risk of electrical shock if the body is grounded.

Do not expose the tool to rain or humid conditions.

Water entering the tool increases the risk of electrical shock.

Do not force the cable. Never use the cable to transport, lift, or disconnect the tool. Keep the cable away from heat, oil, sharp edges, or moving parts.

Damaged or tangled cables increase the risk of electrical shock.

When using a tool outdoors, use a specially designed outdoor extension cord.

Using an appropriate outdoor extension cord reduces the risk of electrical shock.

If using the tool in a damp location is unavoidable, use a power supply protected by a ground fault circuit interrupter (GFCI).

Using a GFCI reduces the risk of electrical shock.

Personal Safety

Be alert, watch what you are doing, and use common sense when handling a tool. Do not use it if you are tired or under the influence of drugs, alcohol, or medication.

A moment of distraction while using the tool can cause personal injury.

Use safety equipment. Always wear eye protection.

The use of safety equipment such as safety glasses, dust mask, slip-resistant shoes, helmet, and ear protection in appropriate conditions significantly reduces the risk of personal injury.



Avoid accidental starts. Ensure the switch is in the "off" position before connecting to the power source and/or the battery or transporting the tool.

Carrying power tools with your finger on the switch or connecting power tools with the switch in the "on" position can cause accidents.

Remove any wrenches or adjusting tools before starting the power tool.

Wrenches or tools left on the rotating parts of the tool can cause personal injury.

Do not exceed your range of motion. Keep both feet firmly planted on the ground and always maintain balance.

This allows better control of the tool in unexpected situations.

Dress appropriately. Do not wear loose clothing or jewelry. Keep your hair, clothing, and gloves away from moving parts.



Loose clothes, jewelry, or long hair may get caught in moving parts.

If dust extraction and collection devices are available for the tool, check their connections and use them correctly.

The use of these devices reduces risks associated with dust.

Tool Use and Care

Do not force the tool. Use the appropriate tool for the task at hand.

The right tool performs better and is safer when used at the intended pace.



Do not use the tool if the switch is not functioning.

Any power tool that cannot be turned on or off is dangerous and must be repaired before operation.

Disconnect the tool from the power source and/or battery before making any adjustments, changing accessories, or storing it.

These measures reduce the risk of accidentally starting the tool.

Store the tools out of the reach of children and do not allow them to be handled by individuals unfamiliar with the tools or their instructions.



Power tools are dangerous in untrained hands.

The machine must not be used by children or persons with reduced physical, sensory or mental capacities; nor by persons with no experience or knowledge in its use, unless they are supervised by a person responsible for their safety or have received prior instructions on the use of the machine.

Children must be supervised to ensure that they do not play with the machine.

Service the tool. Check the mobile parts are not misaligned or stuck. There should not be broken parts or other conditions that may affect its operation. Repair any damage before using the tool.

Most accidents are caused due to poor maintenance to the tools.



Keep the cutting accessories sharp and clean.

Cutting accessories in good working conditions are less likely to bind and are easier to control.

Use the tool, components and accessories in accordance with these instructions and the projected way to use it for the type of tool when in adequate working conditions.

Using the tool for applications different from those it was designed for, could result in a hazardous situation.

Service

Send your power tool for repair to trained personnel using only identical replacement parts.

This will ensure the safety of the power tool is maintained.

Safety warnings for the use of blowers



PRETUL

Before operating the blower

⚠ DANGER • Always check walls, floors, and ceilings to avoid contact with electrical cables and/or pipes.

⚠ CAUTION • Keep the handles and grip surfaces dry, clean, and free of oil and grease. Slippery handles and grip surfaces do not allow safe handling and control of the tool in unexpected situations.

⚠ CAUTION • The operator or user is responsible for accidents or hazards that occur to other people or their properties.

- Do not use electric tools where there is a risk of fire or explosion, i.e., near flammable liquids or gases.
- Dispose of plastic bags safely as they pose a choking hazard to young children.
- Before using any power tool, check for damaged parts first, and if found, do not use them until the parts have been replaced with new ones.

The operator or user is responsible for accidents or hazards that occur to other people or their properties.

⚠ CAUTION • Do not allow people, especially children or pets, to enter the area where you are working.

- Do not allow children or other people to touch the power tools.
- Store in a dry place and out of the reach of children.
- Always wear safety glasses. We also recommend the use of hearing protection.
- Use non-slip shoes. Do not wear sandals or open-toed shoes.
- If you have long hair, secure it safely to prevent entanglement in moving parts.
- To avoid dust irritation, we recommend using a dust mask.
- Do not use power tools when tired or under the influence of alcohol.
- Do not stretch too far while working; you may lose your balance.

While operating the blower

⚠ CAUTION • Hold the power tool by the insulated grip surfaces when performing an operation where the cutting attachment may meet hidden electrical cables. If the cutting attachment meets a "live" cable, the exposed metal parts of the power tool may become charged and give an electric shock to the operator.

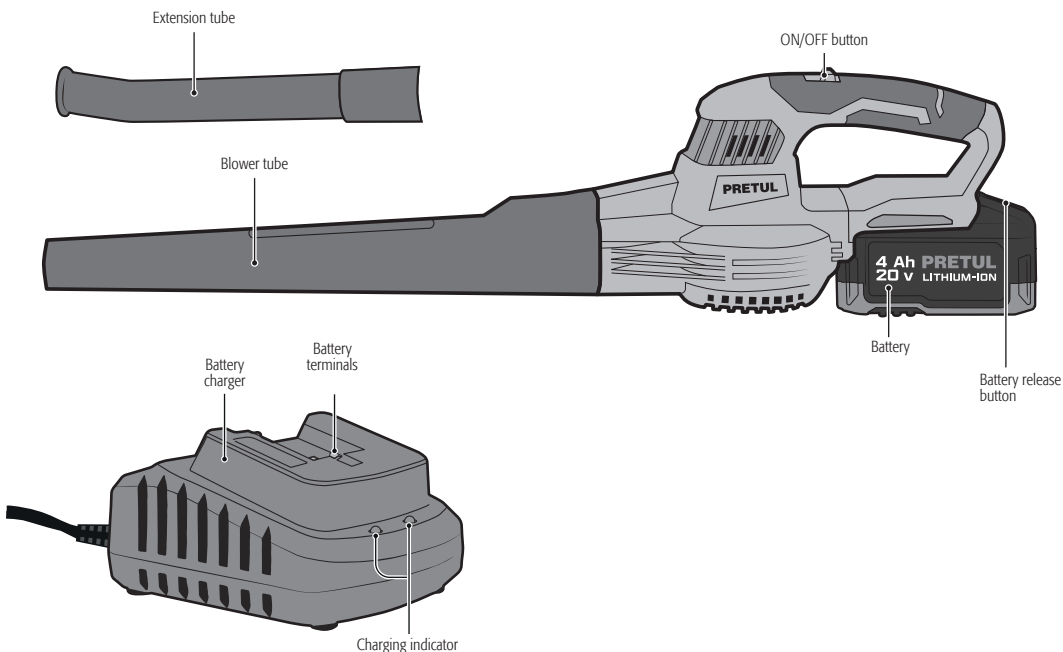
⚠ WARNING • Use this tool only for its intended purpose: blowing leaves.

- Do not aim the blower at people or animals. Do not blow debris in the direction of people or animals.
- Operate the tool only during the day or in good artificial lighting.
- Always ensure you have good balance on slopes.
- Walk, do not run.
- Keep all air inlets free of debris or obstructions.
- Use only suitable extension cords for outdoor use. The cord must be kept away from excessive heat, oil, solvents, and sharp edges. Check periodically that all bolts and screws are tight.
- Remove the tool's battery before inspecting, cleaning, performing maintenance on the machine, if the machine starts vibrating abnormally, or whenever you finish using the machine.

After operating the blower

⚠ CAUTION • Turn off the tool with the switch after use.

- Do not put your hand inside the blower tube until it has been.
- Keep all screws and bolts tight to ensure the tool is in safe working condition. Check the debris collector frequently for wear or damage.
- Replace worn or damaged parts.
- Use only original spare parts and accessories.



Assembly

Battery

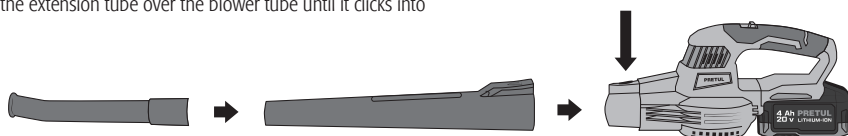
- CAUTION** Remove the battery before performing any work on the power tool. The battery must be charged before the first use.
- Ensure the exterior of the battery is clean and dry before connecting it to the charger or the machine.
 - Insert the battery into the base of the machine and push it until it clicks into place.
 - To remove it, press the battery release button.

Battery charge status

- To check the battery's charge status, briefly press the button on the battery.
- The battery has 3 lights indicating the charge level; the more lights that are on, the more charge the battery has.
- When the lights are not on, it means the battery is empty and should be charged immediately.

Assembly of the tubes

- CAUTION** Always remove the battery before mounting an accessory.
- Slide the blower tube onto the motor housing until it clicks into place.
 - Slide the extension tube over the blower tube until it clicks into place.

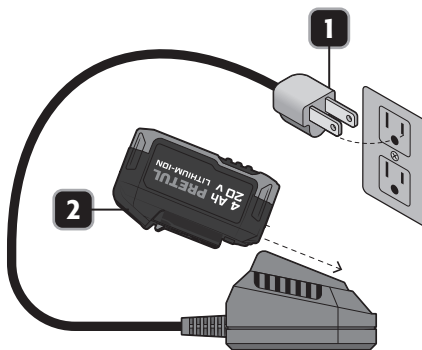


Start Up

PRETUL

Battery Charge

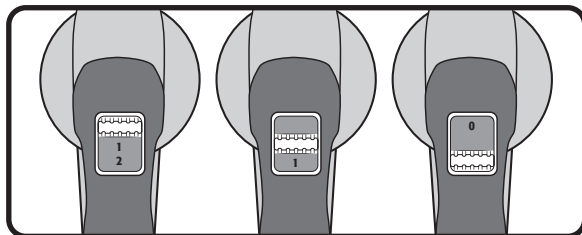
- Connect the charger plug to a 127 V~ power outlet (1).
- Insert the battery into the charger by sliding it as shown in the picture (2). The green light will turn off, and the red light on the charger, along with the battery indicator lights, should illuminate, indicating that the charging process has begun.
- When the battery is fully charged, the green light will turn on, and the red light will turn off. Disconnect the charger from the power source once the charging is complete.
- If the red light is flashing, it signals that the battery temperature is below 0 °F or above 45 °F. Wait until the battery temperature is within the appropriate range before charging.
- If the battery indicator lights do not turn on after inserting the battery into the charger, it indicates a defective battery. Please replace the battery with a new one.



Red LED	Green LED	Charging
OFF	OFF	No battery
OFF	ON	Standby mode, charging finished
ON	OFF	Charging

On/off the machine

- To turn on the blower, move the on/off switch to position 1 or 2.
- Position 1: Blow light materials.
Position 2: Blow heavy materials.
- To turn off, press the on/off switch to position 0.



⚠ WARNING Immediately turn off if:

- Excessive sparking of the carbon brushes and disorder in the collector occurs.
- The switch is defective.
- There is smoke or a burning smell.

Safety warnings for the battery

⚠ WARNING Always check that the power voltage matches the voltage on the rating plate.

- Do not use the charger if the power cord or plug is damaged.
- Use only extension cords that are suitable for the rated power of the charger with a minimum thickness of 1.5 mm². If using a coiled extension cord, always completely unwind the cord.
- Do not open the battery. Short-circuit danger. Protect the battery from heat, such as intense continuous sunlight, fire, water, and moisture. Explosion hazard.
- In case of damage and misuse of the battery, vapors may be released. Ventilate the area and seek medical help if discomfort occurs. Vapors can irritate the respiratory system.
- Use the battery only in conjunction with its product. This measure protects the battery against dangerous overloads.
- The battery can be damaged by sharp objects such as nails or screwdrivers, or by external force application. Internal short-circuiting may occur, and the battery can catch fire, emit smoke, explode, or overheat.

⚠ WARNING • Only use the following batteries from the PRETUL 20V battery platform. The use of any other battery could cause serious injury or damage to the tool.

21019 BAT-20PR

20 V, 2 Ah lithium-ion

28275 BAT-20P4

20 V, 4 Ah lithium-ion

- The following charger can be used to charge these batteries.

29025 CAR-20P2

Fast charger

- PRETUL 20V battery platform batteries are interchangeable with all tools from the PRETUL 20 V battery platform.

Safety warnings for the charger

- Charge only rechargeable batteries of the 20 V PRETUL line with the charger. The use of other types of batteries may cause them to explode, resulting in personal injury and damage.
- Do not recharge non-rechargeable batteries.
- During charging, batteries should be placed in a well-ventilated area.

⚠ WARNING Before cleaning and performing maintenance, always turn off the machine and remove the battery from the machine.

Cleaning and care

- Regularly clean the machine's casings with a soft cloth, preferably after each use.
- Ensure that the ventilation openings are free of dust and dirt.
- Remove dirt using a soft cloth dampened with soapy water.
- Do not use solvents such as gasoline, alcohol, ammonia, etc. These chemicals can damage synthetic components.
- Periodically check the battery for any damage. If damaged, have the battery replaced at an authorized TRUPER® Service Center.

Service

- Tool servicing should only be carried out at an authorized TRUPER® Service Center.
- Service and maintenance performed by unqualified individuals can be dangerous and may result in personal injury, invalidating the product warranty.
- Never repair damaged batteries. Battery servicing should only be done by the manufacturer or authorized service providers.

Battery use and care

- Recharge only with the charger specified by the manufacturer. Using a charger suitable for one type of battery with another type may pose a fire risk.
- Use electric tools only with batteries specifically designated. Using other batteries may create a risk of injury and fire.
- When batteries are not in use, keep them away from other metal objects, such as clips, coins, keys, nails, screws, or other small metal objects that may contact one terminal to another. Short-circuiting between battery terminals can cause burns or a fire.
- Under abusive conditions, battery liquid may be expelled; avoid contact. If accidental contact occurs, rinse with water. If the liquid meets the eyes, seek medical help. The expelled battery liquid can cause irritation or burns.
- Do not use damaged or modified batteries. Damaged or modified batteries may exhibit unpredictable behavior resulting in fires, explosions, or injury risks.
- Do not expose batteries to fire or excessive temperatures. Exposure to fire or temperatures exceeding 265 °F can cause an explosion.

- Follow all recharge instructions and do not recharge batteries outside the specified temperature range in the instructions. Incorrect charging or charging at temperatures outside the specified range can damage the battery and increase the risk of fire.

Environmental protection

⚠ ADVERTENCIA Defective or discarded electrical or electronic devices should be collected at appropriate recycling locations.

- Do not dispose of electric tools in household waste. According to European Directive 2012/19/EU on Waste Electrical and Electronic Equipment and its implementation in national legislation, electric tools that can no longer be used must be collected separately and disposed of in an environmentally friendly manner.

Problem	Cause	Corrective action
The tool loses efficiency.	<ul style="list-style-type: none"> • Low battery. 	<ul style="list-style-type: none"> • Charge the battery.
The battery leaks.	<ul style="list-style-type: none"> • Minor dripping may occur in extreme temperatures or after heavy use; this is normal. • Intense or very evident dripping is due to a damaged battery. 	<ul style="list-style-type: none"> • Clean the liquid from the skin or clothing immediately with water and soap. • Replace the battery immediately.
The battery does not charge, and the charger light does not turn on.	<ul style="list-style-type: none"> • Battery improperly placed in the charger. • Charger improperly connected to the electrical outlet. 	<ul style="list-style-type: none"> • Correctly insert the battery into the charger. • Check that the plug is properly connected to the outlet.
The tool heats up after prolonged periods of work.	<ul style="list-style-type: none"> • Normal heating due to energy absorption from the motor gears and electricity during work. 	<ul style="list-style-type: none"> • Let the tool cool down for a period of 5 minutes.
The battery heats up during operation.	<ul style="list-style-type: none"> • Normal heating due to energy extracted from the battery while the tool is in operation. 	<ul style="list-style-type: none"> • Stop the tool for a period of 5 minutes to allow the battery to cool down.
The battery heats up during charging.	<ul style="list-style-type: none"> • Normal heating due to chemical reactions inside the battery during charging. 	
The charger heats up during charging.	<ul style="list-style-type: none"> • Normal heating due to voltage regulation. 	

Authorized service centers

PRETUL

In the event of any problem contacting a Service Center, please see our webpage WWW.TRUPER.COM to get an updated list, or call our toll-free numbers 800 690-6990 or 800 018-7873 to get information about the nearest TRUPER Authorized Service Center.

AGUASCALIENTES **DE TODO PARA LA CONSTRUCCIÓN**
GRAL. BARRAGÁN #1201, COL. GREMIAL, C.P. 20030,
AGUASCALIENTES, AGS. TEL.: 449 994 0537

BAJA CALIFORNIA **SUCURSAL TIJUANA**
AV. LA ENCANTADA, LOTE #5, PARQUE INDUSTRIAL EL
FLORIDO II, C.P. 22244, TIJUANA, B.C.
TEL.: 664 969 5100

BAJA CALIFORNIA SUR **FIX FERRETERÍAS**
FELIPE ANGELES ESQ. RUIZ CORTÍNEZ S/N, COL. PUEBLO
NUEVO, C.P. 23670, CD. CONSTITUCIÓN, B.C.S.
TEL.: 613 132 1115

CAMPECHE **TORNILLERÍA Y FERRETERÍA AAA**
AV. ALVARO OBREGÓN #324, COL. ESPERANZA
C.P. 24080 CAMPECHE, CAMP. TEL.: 981 815 2808

CHIAPAS **FIX FERRETERÍAS**
AV. CENTRAL SUR #27, COL. CENTRO, C.P. 30700,
TAPACHULA, CHIS. TEL.: 962 118 4083

CHIHUAHUA **SUCURSAL CHIHUAHUA**
AV. SILVESTRE TERRAZAS #128-11, PARQUE INDUSTRIAL
BAFAR, CARRETERA MÉXICO CUAUHTÉMOC, C.P. 31415,
CHIHUAHUA, CHIH. TEL. 614 434 0052

CIUDAD DE MÉXICO **FIX FERRETERÍAS**
EL MONSTRUO DE CORREGIDORA, CORREGIDORA # 35,
COL. CENTRO, C.P. 06060, CUAUHTÉMOC, CDMX.
TEL.: 55 5522 5031 / 5522 4861

COAHUILA **SUCURSAL TORREÓN**
CALLE METAL MECÁNICA #280, PARQUE INDUSTRIAL
ORIENTE, C.P. 27278, TORREÓN, COAH.
TEL.: 871 209 68 23

COLIMA **BOMBAS Y MOTORES BYMATES DE MANZANILLO**
BLVD. MIGUEL DE LA MADRID #190, COL. 16 DE
SEPTIEMBRE, C.P. 28239, MANZANILLO, COL.
TEL.: 314 332 1986 / 332 8013

DURANGO **TORNILLOS ÁGUILA, S.A. DE C.V.**
MAZURIO #200, COL. LUIS ECHEVERRÍA, DURANGO,
DGO. TEL.: 618 817 1946 / 618 818 2844

ESTADO DE MÉXICO **SUCURSAL CENTRO JILOTEPEC**
PARQUE INDUSTRIAL # 1, COL. PARQUE INDUSTRIAL
JILOTEPEC, JILOTEPEC, EDO. DE MÉX. C.P. 54257
TEL.: 761 782 9101 EXT. 5728 Y 5102

GUANAJUATO **CÍA. FERRETERA NUEVO MUNDO S.A. DE C.V.**
AV. MÉXICO - JAPÓN #225, CD. INDUSTRIAL, C.P. 38010,
CELAYA, GTO. TEL.: 461 617 7578 / 79 / 80 / 88

GUERRERO **CENTRO DE SERVICIO ECLIPSE**
CALLE PRINCIPAL M21 LT. 1, COL. SANTA FE, C.P. 39010,
CHILPANCINGO, GRO. TEL.: 747 478 5793

HIDALGO **FERREPRECIOS S.A. DE C.V.**
LIBERTAD ORIENTE #304 LOCAL 30, INTERIOR DE PASAJE
ROBLEDO, COL. CENTRO, C.P. 43600, TULANCINGO,
HGO. TEL.: 775 753 6615 / 775 753 6616

JALISCO **SUCURSAL GUADALAJARA**
AV. ADOLFO B. HORN # 6800, COL: SANTA CRUZ DEL
VALLE, C.P.: 45655, TLAJOMULCO DE ZUÑIGA, JAL.
TEL.: 33 3606 5285 AL 90

MICHOACÁN **FIX FERRETERÍAS**
AV. PASEO DE LA REPÚBLICA #3140-A, COL.
EX-HACIENDA DE LA HUERTA, C.P. 58050, MORELIA,
MICH. TEL.: 443 334 6858

MORELOS **FIX FERRETERÍAS**
CAPITÁN ANZURES #95, ESQ. JOSÉ PERDIZ, COL.
CENTRO, C.P. 62740, CUAUTLA, MOR.
TEL.: 735 352 8931

NAYARIT **HERRAMIENTAS DE TEPEC**
MAZATLAN #117, COL. CENTRO, C.P. 63000, TEPEC, NAY.
TEL.: 311 258 0540

NUEVO LEÓN **SUCURSAL MONTERREY**
CARRETERA LAREDO #300, 1B MONTERREY PARKS,
COLONIA PUERTA DE ANAHUAC, C.P. 66052, ESCOBEDO,
NUEVO LEÓN, TEL.: 81 8352 8791 / 81 8352 8790

OAXACA **FIX FERRETERÍAS**
AV. 20 DE NOVIEMBRE #910, COL. CENTRO, C.P. 68300,
TUXTEPEC, OAX. TEL.: 287 106 3092

PUEBLA **SUCURSAL PUEBLA**
AV. PERIFÉRICO #2-A, SAN LORENZO ALMECATLA,
C.P. 72710, CUAUTLACINGO, PUE.
TEL.: 222 282 8282 / 84 / 85 / 86

QUERÉTARO **ARU HERRAMIENTAS S.A. DE C.V.**
AV. PUERTO DE VERACRUZ #110, COL. RANCHO DE
ENMEDIO, C.P. 76842, SAN JUAN DEL RÍO, QRO.
TEL.: 427 268 4544

QUINTANA ROO **FIX FERRETERÍAS**
CARRETERA FEDERAL MZ. 46 LT. 3 LOCAL 2, COL. EJIDAL,
C.P. 77710 PLAYA DEL CARMEN, Q.R.
TEL.: 984 267 3140

SAN LUIS POTOSÍ **FIX FERRETERÍAS**
AV. UNIVERSIDAD #1850, COL. EL PASEO, C.P. 78320,
SAN LUIS POTOSÍ, S.L.P. TEL.: 444 822 4341

SINALOA **SUCURSAL CULIACÁN**
AV. JESÚS KUMATE SUR #4301, COL. HACIENDA DE LA
MORA, C.P. 80143, CULIACÁN, SIN.
TEL.: 667 173 9139 / 173 8400

SONORA **FIX FERRETERÍAS**
CALLE 5 DE FEBRERO #517, SUR LT. 25 MZ. 10, COL.
CENTRO, C.P. 85000, CD. OBREGÓN, SON.
TEL.: 644 413 2392

TABASCO **SUCURSAL VILLAHERMOSA**
CALLE HELIO LOTES 1, 2 Y 3 MZ. #1, COL. INDUSTRIAL,
2A ETAPA, C.P. 86010, VILLAHERMOSA, TAB.
TEL.: 993 353 7244

TAMAULIPAS **VM ORINGS Y REFACCIONES**
CALLE ROSITA #527 ENTRE 20 DE NOVIEMBRE Y GRAL.
RODRÍGUEZ, FRACC. REYNOSA, C.P. 88780, REYNOSA,
TAMS. TEL.: 899 926 7552

TLAXCALA **SERVICIOS Y HERRAMIENTAS INDUSTRIALES**
PABLO SIDAR #132, COL. BARRIO DE SAN BARTOLOMÉ,
C.P. 90970, SAN PABLO DEL MONTE, TLAX.
TEL.: 222 271 7502

VERACRUZ **LA CASA DISTRIBUIDORA TRUPER**
BLVD. PRIMAVERA, ESQ. HORTENSIA S/N, COL.
PRIMAVERA C.P. 93308, POZA RICA, VER.
TEL.: 782 823 8100 / 826 8484

YUCATÁN **SUCURSAL MÉRIDA**
CALLE 33 #600 Y 602, LOCALIDAD ITZINCAB Y Mulsay,
MPIO. UMÁN, C.P. 97390, MÉRIDA, YUC.
TEL.: 999 912 2451

Code	Model	Brand
28274	SOPI-20P	PRETUL

Warranty. Duration: 1 year. Coverage: parts, components and workmanship against manufacturing or operating defects, except if used under conditions other than normal; when it was not operated in accordance with the instructive; was altered or repaired by personnel not authorized by TRUPER®. To make the warranty valid, present the product, stamped policy or invoice or receipt or voucher, in the establishment where you bought it or in Corregidora 35, Centro, Cuauhtémoc, CDMX, 06060, where you can also purchase parts, components, consumables and accessories. It includes the costs of transportation of the product that derive from its fulfillment of its service network. Phone number 800-018-7873. Made in China. Imported by TRUPER, S.A. de C.V. Parque Industrial 1, Parque Industrial Jilotepec, Jilotepec, Edo. de Méx. C.P. 54257, Phone number 761 782 9100.

Stamp of the business. Delivery date:

